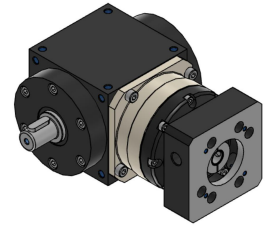
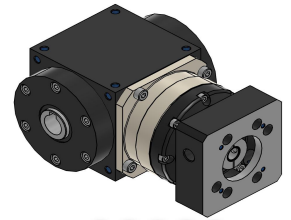


Right Angle Bevel Gearbox L Shape/Hollow/T-shape/Clamping

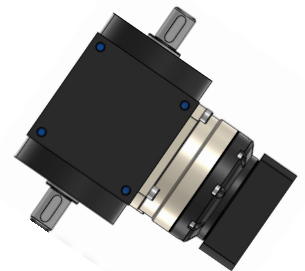
Specification	Unit	Stage	Ratio	RBL070	RBL090	RBL110	RBL140	RBL170	RBL210	
				RBH070	RBH090	RBH110	RBH140	RBH170	RBH210	
				RBT070	RBT090	RBT110	RBT140	RBT170	RBT210	
				RBC070	RBC090	RBC110	RBC140	RBC170	RBC210	
Rated Output Torque T _{2N}	Nm	1	1	25	78	150	360	580	1300	
			2	25	68	150	360	580	1300	
			2	4	25	50	150	305	580	1300
				5	25	60	150	330	580	1300
				6	25	50	140	300	550	1000
				7	25	50	140	300	550	1000
				8	25	68	150	360	580	1300
				10	25	68	150	360	580	1300
				12	25	68	150	360	580	1300
				14	25	68	150	360	580	1300
		3	16	25	68	150	360	580	1300	
			20	25	68	150	360	580	1300	
			25	25	60	150	330	580	1300	
			30	25	50	140	300	550	1000	
			35	25	50	140	300	550	1000	
			40	25	68	150	360	580	1300	
			50	25	68	150	360	580	1300	
			60	25	68	150	360	580	1300	
			70	25	68	150	360	580	1300	
			80	25	68	150	360	580	1300	
100	25	68	150	360	580	1300				
120	25	68	150	360	580	1300				
140	25	68	150	360	580	1300				
160	25	68	150	360	580	1300				
200	25	68	150	360	580	1300				
Emergency stop Torque T _{2NoT}	Nm	1,2,3	1~200	2 times rated output torque (2 Times T _{2N})						
Rated Input Speed n _{1N}	rpm	1	1~2	3000	3000	3000	3000	3000	2000	
		2	4~20	3000	3000	3000	3000	3000	3000	
		3	25~200	3000	3000	3000	3000	3000	3000	
Max Input Speed n _{1B}	rpm	1	1~2	6000	6000	5000	4500	3500	3000	
		2	4~20	6000	6000	5000	4500	3500	3000	
		3	25~200	6000	6000	6000	5000	4500	3500	
Super Precision Backlash P ₀	arcmin	1	1~2	≤2	≤2	≤2	≤2	≤2	≤2	
		2	4~20	≤3	≤3	≤3	≤3	≤3	≤3	
		3	25~200	≤5	≤5	≤5	≤5	≤5	≤5	
WIMPS/Precision Backlash P ₁	arcmin	1	1~2	≤4	≤4	≤4	≤4	≤4	≤4	
		2	4~20	≤6	≤6	≤6	≤6	≤6	≤6	
		3	25~200	≤8	≤8	≤8	≤8	≤8	≤8	
Standard Backlash P ₂	arcmin	1	1~2	≤6	≤6	≤6	≤6	≤6	≤6	
		2	4~20	≤8	≤8	≤8	≤8	≤8	≤8	
		3	25~200	≤10	≤10	≤10	≤10	≤10	≤10	
Allowable Radial Force F _{2R}	N			2000	3200	5000	6500	9100	13000	
Allowable Axle Force F _{2A}	N			1000	1600	2500	3250	4550	6500	
Service Life	h			20000						
Efficiency	%	1	1~2	≥97						
		2	4~20	≥95						
		3	25~200	≥92						
Operating temperature	°C			-20°C~90°C						
Weight	kg	1	1~2	3	7	11.5	19.5	34	65	
		2	4~20	3.2	8	14	24	38	74	
		3	25~200	3.4	8.5	14.5	27	39	75	
Protection class				Ip65						
Lubrication				Synthetic Lubricating Oil						
Mounting position				In any direction						
Noise	dB(A)	1		≤72	≤74	≤76	≤78	≤80	≤82	
		2		62	62	64	66	68	72	
		3		62	62	64	66	≤68	≤72	



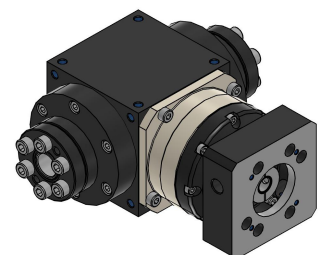
RBL



RBH



RBT



RBC